

+/- 40 Acres

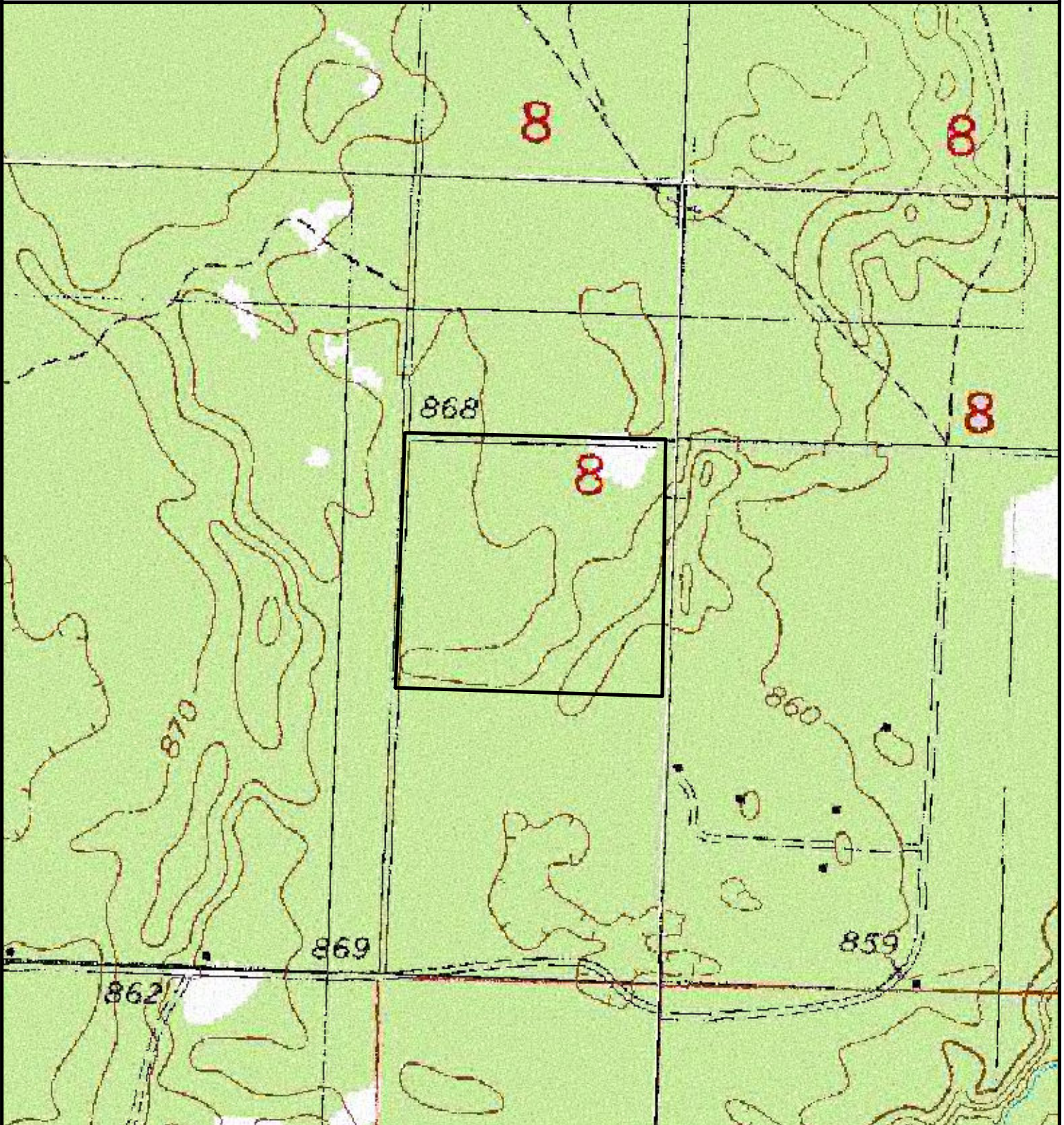
Tract - 2036

Sale 2036 - Whiskey River

T36N-R19W-S8

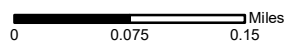
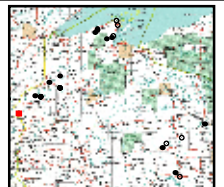
Polk County

List Price - \$107,605.29



 Sale Parcel

Map Disclaimer:
This map is intended to provide a visual representation of property and geographic features. It is not a legal survey but a depiction of the property based on reasonably available information suitable for the intended purposes. This map shows the approximate relative location of property boundaries but was not prepared by a professional land surveyor. The use of this map is limited to applications consistent with the intent and accuracy of the map and source data. It may not be sufficient or appropriate for legal, engineering, or surveying purposes. No guarantees or warranties are expressed. This map is not a survey of the actual boundary of any property this map depicts.



October 2017